

## 1000LED INC

p: 877-340-1700

c: 214-597-4288

a: 1250A Wattley Way Ste 100

a: McKinney, TX 75069

w: [www.1000LED.com](http://www.1000LED.com)

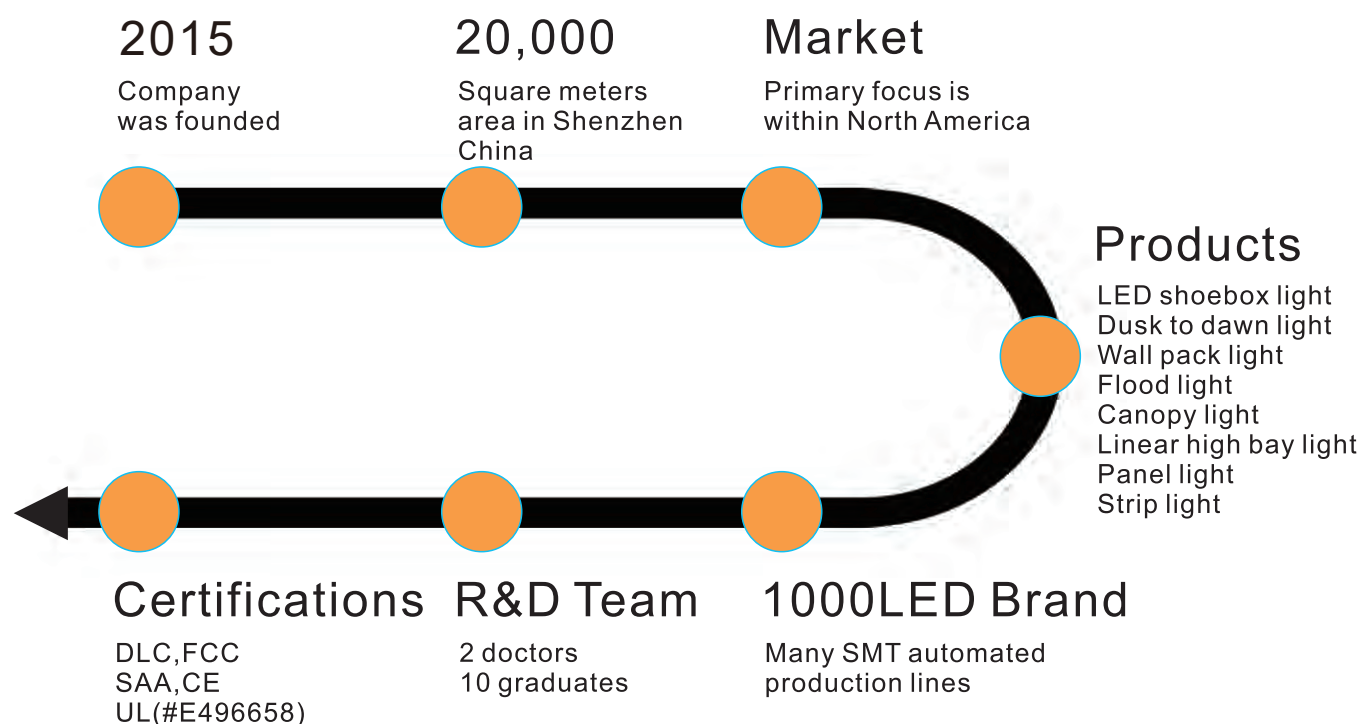
e: [info@1000led.com](mailto:info@1000led.com)



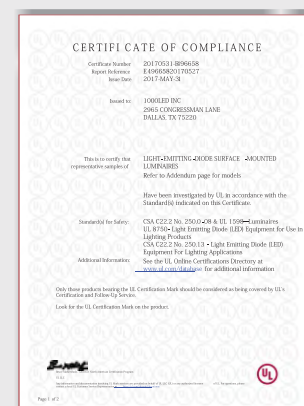
2021

# ABOUT US

## about:



## Certifications



## CONTENTS

GEN2 Shoebox Lights page.03

Installation Hardware page.05

Dusk To Dawn Lights page.07

Wall Pack Lights page.09

GEN2 Flood Lights page.15

Slim Canopy Lights page.17

Linear High Bay Lights page.19

UFO High Bay Lights page.20

Flat Panel Lights page.21

Strip Lights page.22



## 100/150/200W LED Shoebox Light

Model: 1L-10WSB27-50K-D-T3  
1L-15WSB27-50K-D-T3  
1L-20WSB27-50K-D-T3

Power: 100W/150W/200W Luminous Flux: 15658/22500/30000LM

PF: >0.95 CRI: Ra>70

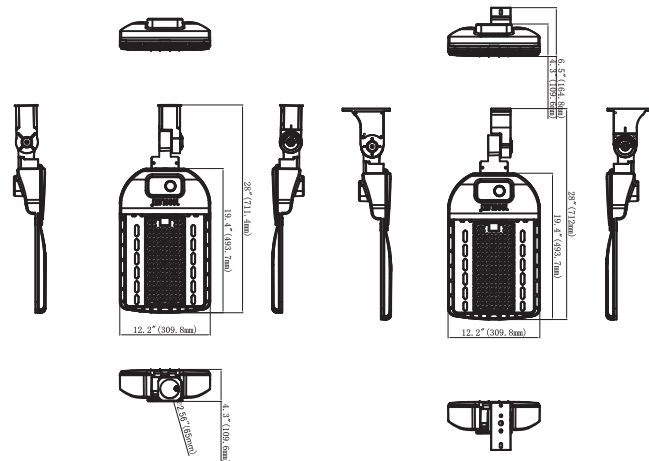
- ▶ L70: >100,000 hrs
- ▶ Input Voltage: AC120~277V or AC200~480V
- ▶ Protection Level: Wet Location/IP66
- ▶ Lighting Angle: Type II, Type III, Type IV, Type V



## Dimension

Unit: inch/mm

100/150/200W (Slip Fitter Mount) 100/150/200W (Arm Mount)



## 300W LED Shoebox Light

Model: 1L-30WSB27-50K-D-T3

Power: 300W Luminous Flux: 45000LM

PF: >0.95 CRI: Ra>70

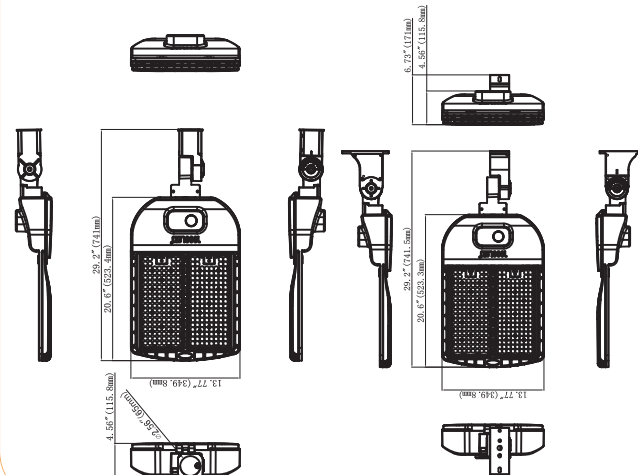
- ▶ L70: >100,000 hrs
- ▶ Input Voltage: AC120~277V or AC200~480V
- ▶ Protection Level: Wet Location/IP66
- ▶ Lighting Angle: Type II, Type III, Type IV, Type V



## Dimension

Unit: inch/mm

300W (Slip Fitter Mount) 300W (Arm Mount)



Standard



body

+



(slip fitter / arm / trunnion is optional)

Option 1



body

+



slip fitter

+



photocell

Option 2



body

+



arm

+



photocell

Option 3



body

+



trunnion

+



photocell

Option 4



body + (motion sensor/slip fitter/arm/trunnion is optional)

Option 5



body

+



slip fitter

+



light node

+



gateway

Option 6



body

+



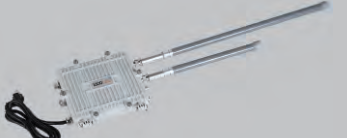
arm

+



light node

+



gateway

Option 7



body

+



trunnion

+



light node

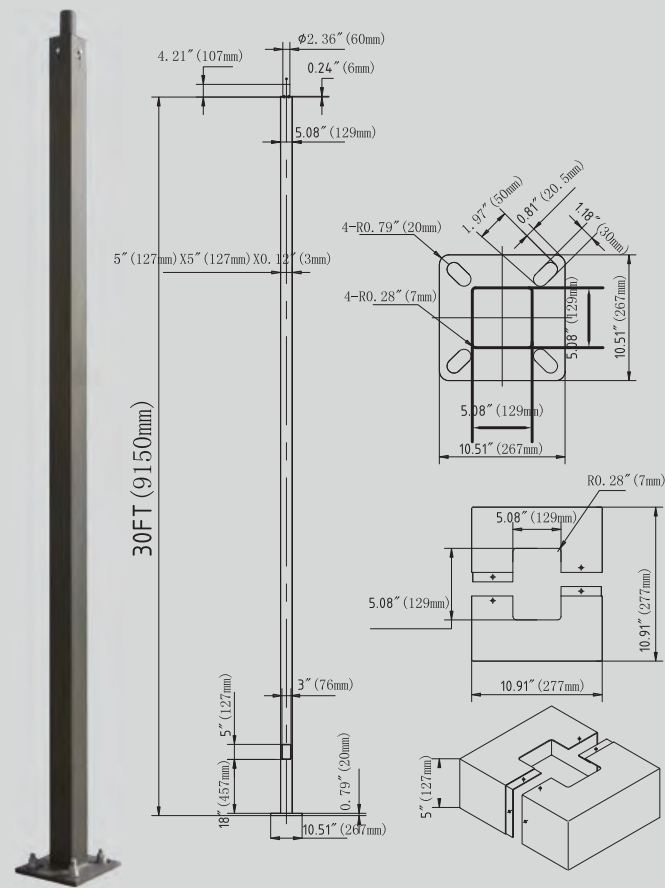
+



gateway



# Installation Hardware



- ▶ 10 FT 4" SQUARE MODEL: 1L-10FT4-11G-D-T
- ▶ 15 FT 4" SQUARE MODEL: 1L-15FT4-11G-D-T
- ▶ 20 FT 4" SQUARE MODEL: 1L-20FT4-11G-D-T
- ▶ 25 FT 4" SQUARE MODEL: 1L-25FT4-11G-D-T
- ▶ 30 FT 5" SQUARE MODEL: 1L-30FT4-11G-D-T

Conforms to ASTM-A500 Grade B: Minimum Yield Strength of 46,000PSI.

Textured Architectural Bronze Powdercoat Finish, Baked to Ensure Maximum Paint Adhesion, Hardness and Durability.

Anchor Bolts are Included, Sized Based on Pole Data Charts for the Selected Pole Size. .

Cast Iron Reinforced Hand Hole and Cover with Ground Screw.

Poles are Provided With a Two-Piece Formed Steel Base Cover that is Easily Assembled and Fitted Over Pole Base

Poles are Available in Standard Lengths as Shown in the Order Matrix. Poles can be Custom Cut to Order. Consult Factory.

Standard Length Poles Include 2" OD Tenon, Side Drilled 4@90 Degrees, Polycarbonate Top Cover and Hole Plugs for Unused Drilling Locations.

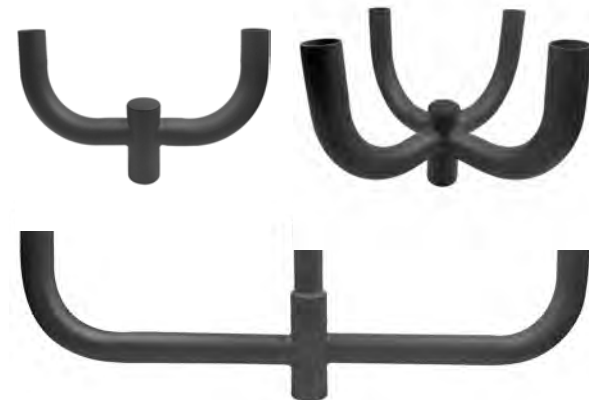
## Tenon Adapters



## Spoke Adapters



## Bullhorns



# Installation Hardware

## POLE BRACKET

- For mounting one fixture on an existing pole

	<p>4" Square Pole Mount with 2-3/8" O.D. Tenon NO. 1L-VT54-D Finish: Dark Bronze USE: For use with square, non-tapered steel and aluminum poles. Furnished with four 5/16" hex head stainless-steel bolts. Vertical tenon measures 2-3/8" O.D., and is made of steel tubing. Fixtures mounted to this bracket can be adjusted both vertically and horizontally.</p>		<p>3" Round Pole Mount with 2-3/8" O.D. Tenon NO. 1L-VT3-D Finish: Dark Bronze USE: For use with Round, non-tapered steel and aluminum poles. Furnished with three 3/8" hex head stainless-steel bolts. Vertical tenon measures 2-3/8" O.D., and is made of steel tubing. Fixtures mounted to this bracket can be adjusted both vertically and horizontally.</p>
	<p>5" Square Pole Mount with 2-3/8" O.D. Tenon NO. 1L-VT55-D Finish: Dark Bronze USE: For use with square, non-tapered steel and aluminum poles. Furnished with four 5/16" hex head stainless-steel bolts. Vertical tenon measures 2-3/8" O.D., and is made of steel tubing. Fixtures mounted to this bracket can be adjusted both vertically and horizontally.</p>		<p>4" Round Pole Mount with 2-3/8" O.D. Tenon NO. 1L-VT4-D Finish: Dark Bronze USE: For use with Round, non-tapered steel and aluminum poles. Furnished with three 3/8" hex head stainless-steel bolts. Vertical tenon measures 2-3/8" O.D., and is made of steel tubing. Fixtures mounted to this bracket can be adjusted both vertically and horizontally.</p>

## WALL BRACKET

- Attaches to any flat surface
- Provides wiring access

	<p>90° Wall Mount Bracket with 2-3/8" O.D. Tenon NO. 1L-ADP2.5-90-D Finish: Dark Bronze USE: The 90° wall mount bracket with 2-3/8" tenon attaches an MESTER floodlight to almost any surface: wall, roof, or wood pole. Provides wiring access and built-in 2-3/8" O.D. tenon to mount a fixture with our adjustable slipfitter. Suggested 3/8" diameter bolts for mounting. Mounting holes are spaced 3-1/4" apart.</p>		<p>2-3/8" OD Horizontal Tenon Mid-Pole Bracket NO. 1L-ADP2.5-D Finish: Dark Bronze USE: 2-3/8" OD Horizontal Tenon Mid-Pole Bracket is designed to mount light fixture that is equipped with an adjustable slipfitter onto a 2-3/8" OD horizontal tenon</p>
--	---	--	---

## ROUND EXTERNAL MOUNT HORIZONTAL TENON · To mount 2/3/4 fixtures on an existing pole

	<p>Double 90° Horizontal Tenon Adaptor NO. 1L-SB2.5TW90-D Finish: Dark Bronze USE: The Bracket is designed to mount over 2-3/8" (60mm) O.D. vertical tenon. Two fixtures can be mounted to the Round External Mount Horizontal Tenon and adjusted horizontally</p>		<p>Triple 120° Horizontal Tenon Adaptor NO. 1L-SB2.5TR120-D Finish: Dark Bronze USE: The Bracket is designed to mount over 2-3/8" (60mm) O.D. vertical tenon. Three fixtures can be mounted to the Round External Mount Horizontal Tenon and adjusted horizontally</p>
	<p>Double 180° Horizontal Tenon Adaptor NO. 1L-SB2.5TW180-D Finish: Dark Bronze USE: The Bracket is designed to mount over 2-3/8" (60mm) O.D. vertical tenon. Two fixtures can be mounted to the Round External Mount Horizontal Tenon and adjusted horizontally</p>		<p>Quad 90° Horizontal Tenon Adaptor NO. 1L-SB2.5QD90-D Finish: Dark Bronze USE: The Bracket is designed to mount over 2-3/8" (60mm) O.D. vertical tenon. Four fixtures can be mounted to the Round External Mount Horizontal Tenon and adjusted horizontally</p>
	<p>Single Spoke Bracket Tenon Adaptor NO. 1L-SB2.5S-D Finish: Dark Bronze USE: The Bracket is designed to mount over 2-3/8" (60mm) O.D. vertical tenon. Three fixtures can be mounted to the Round External Mount Horizontal Tenon and adjusted horizontally</p>		<p>Double 180° Horizontal Tenon Adaptor NO. 1L-RB2.5D180-D Finish: Dark Bronze USE: The Bracket is designed to mount over 2-3/8" (60mm) O.D. vertical tenon. Three fixtures can be mounted to the Round External Mount Horizontal Tenon and adjusted horizontally</p>
	<p>Triple 180° Horizontal Tenon Adaptor NO. 1L-RB2.5TR180-D Finish: Dark Bronze USE: The Bracket is designed to mount over 2-3/8" (60mm) O.D. vertical tenon. Three fixtures can be mounted to the Round External Mount Horizontal Tenon and adjusted horizontally</p>		<p>Triple 90° Horizontal Tenon Adaptor NO. 1L-RB2.5QD90-D Finish: Dark Bronze USE: The Bracket is designed to mount over 2-3/8" (60mm) O.D. vertical tenon. Three fixtures can be mounted to the Round External Mount Horizontal Tenon and adjusted horizontally</p>
	<p>Slip Fitter Square tube turn tube Tenon Adaptor NO. 1L-SADP-BAR Finish: Dark Bronze USE: For square tube light bar installation, with slip Fitter installation of lamps.</p>		<p>Arm Square tube turn tube Tenon Adaptor NO. 1L-ARM-BAR Finish: Dark Bronze USE: Square tube light bar installation, with Arm installation of lamps.</p>



## 45W Dusk To Dawn Light



### Dusk To Dawn Light

Model: 1L-45DW27-50K-Y  
Power: 45W Luminous Flux: 6300LM  
PF: >0.98 CRI: Ra>70

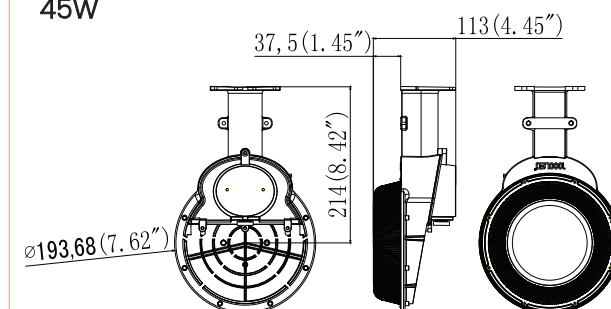
- ▶ L70: >100,000 hrs
- ▶ Input Voltage: AC120~277V
- ▶ Protection Level: Wet Location/IP66
- ▶ Lighting Angle: 124°



### Dimension

Unit: inch/mm

45W



### Standard

1L-45DW27-50K-Y



body

### Option 1

1L-45DW27-50K-P(120-277)-A



body

+



photocell

+



adaptor  
(optional)

### Option 2

1L-45DW27-50K-WM-A



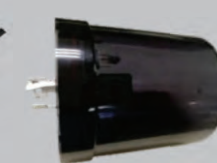
body

+



7 pin

+



light note

+



adaptor  
(optional)



gateway



## ARCHITECTURAL WALL PACK LIGHT



### Wall Pack Light (Slim Adjust)

Model: 1L-45WAWP27-50K-D-P  
1L-70WAWP27-50K-D-P

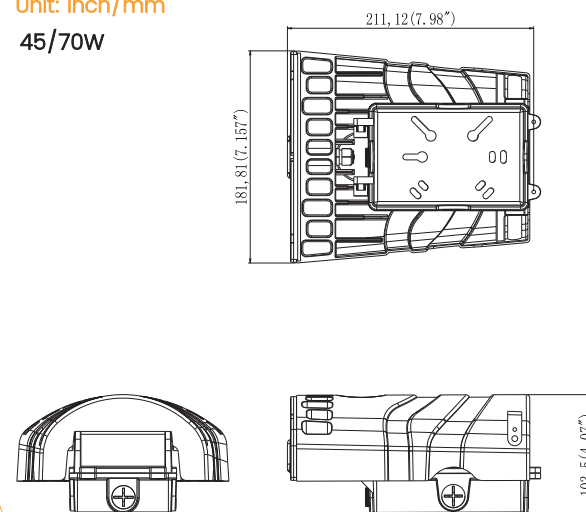
Power: 45W/70W      Luminous Flux: 6741/9841LM  
PF: >0.98/0.99      CRI: Ra>70

- ▶ L70: >100,000 hrs
- ▶ Input Voltage: AC120~277V
- ▶ Protection Level: Wet Location/IP66
- ▶ Lighting Angle: 74°\*92°



### Dimension

Unit: inch/mm  
45/70W

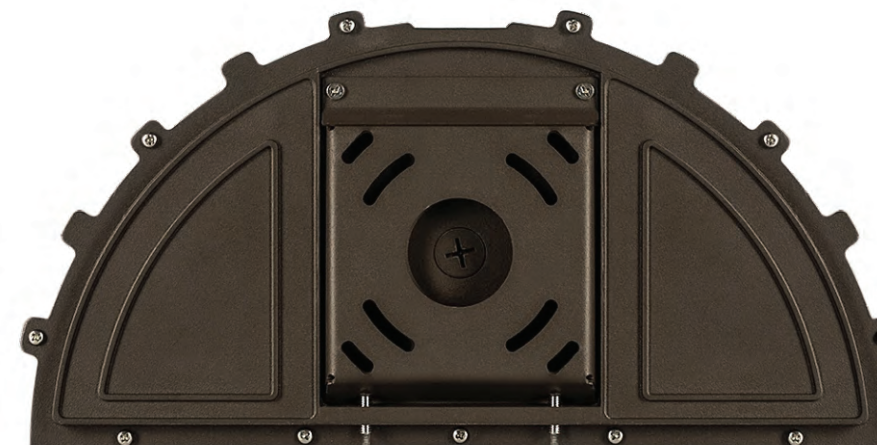


## Wall Pack Light Series

### Football Wall Pack



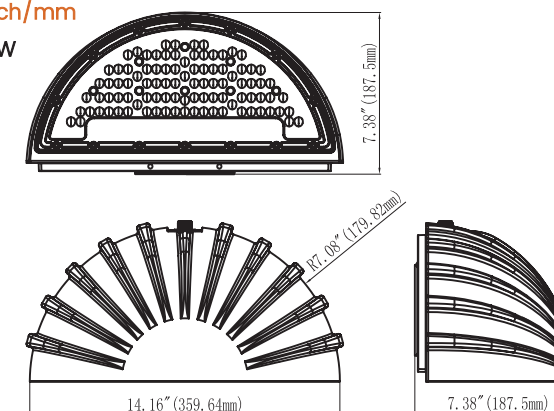
Front



Back

### Dimension

Unit: inch/mm  
45/70W



### Wall Pack Light (Football Full cut off)

Model: 1L-45WBWP27-50K-D  
1L-70WBWP27-50K-D

Power: 45W/70W      Luminous Flux: 5650/8300LM  
PF: >0.95      CRI: Ra>80

- ▶ L70: >100,000 hrs
- ▶ Input Voltage: AC120~277V
- ▶ Protection Level: Wet Location/IP65
- ▶ Lighting Angle: 45°\*90°



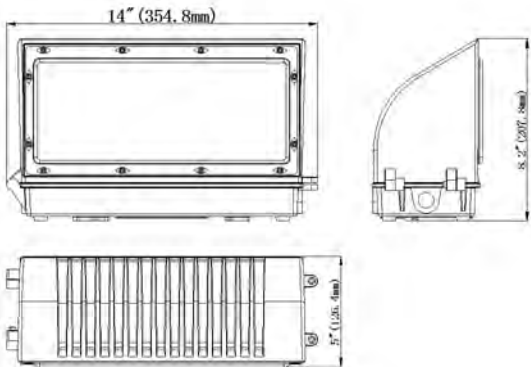


Full Cutoff Wall Packs



Dimension

Unit: inch/mm  
45/70W



45/70W Full Cutoff Wall Pack Light

Model: 1L-45WFWP27-50K-D  
1L-70WFWP27-50K-D

Power: 45W/70W    Luminous Flux: 4800/7200LM

PF: >0.95    CRI: Ra>80

- ▶ WL: >50,000 hrs
- ▶ Input Voltage: AC120~277V Protection
- ▶ Level: Wet Location/IP65 Lighting
- ▶ Angle: 60°/90°



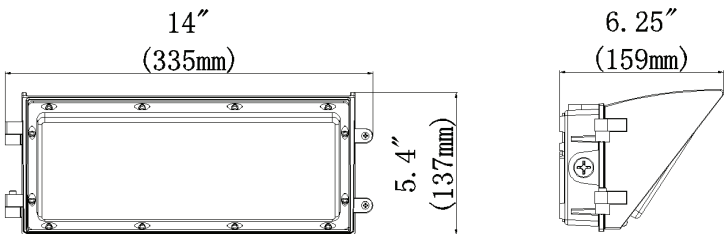
Wall Pack Light Series

Semi Cutoff Wall Packs



Dimension

Unit: inch/mm  
45W



45W Semi Cutoff Wall Pack Light

Model: 1L-45WFWP27-50K-D

Power: 45W    Luminous Flux: 4950LM PF: >0.95

CRI: Ra>80

- ▶ WL: >50,000 hrs
- ▶ Input Voltage: AC120~277V Protection
- ▶ Level: Wet Location/IP65 Lighting
- ▶ Angle: 60°/90°





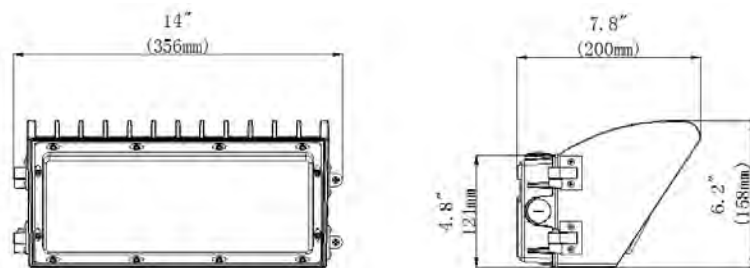
## Semi Cutoff Wall Packs



### Dimension

Unit: inch/mm

70W



### 70W Semi Cutoff Wall Pack Light

Model: 1L-HWP07W27-50K-D

Power: 45W/70W Luminous Flux: 7200LM

PF: >0.95 CRI: Ra>80

- ▶ WL: >50,000 hrs
- ▶ Input Voltage: AC120~277V Protection
- ▶ Level: Wet Location/IP65 Lighting
- ▶ Angle: 60°/90°



## Wall Pack Light Series

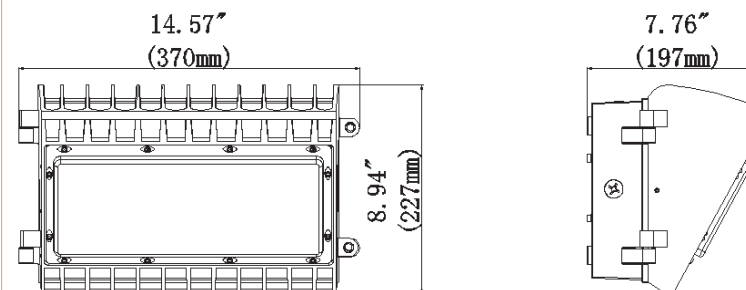
## Semi Cutoff Wall Packs



### Dimension

Unit: inch/mm

100/150W



### 100/150W Semi Cutoff Wall Pack Light

Model: 1L-HWP10W27-50K-D

1L-HWP15W27-50K-D

Power: 100W/150W Luminous Flux: 11,000/16,000LM

PF: >0.95 CRI: Ra>80

- ▶ WL: >50,000 hrs
- ▶ Input Voltage: AC120~277V Protection
- ▶ Level: Wet Location/IP65 Lighting
- ▶ Angle: 60°/90°

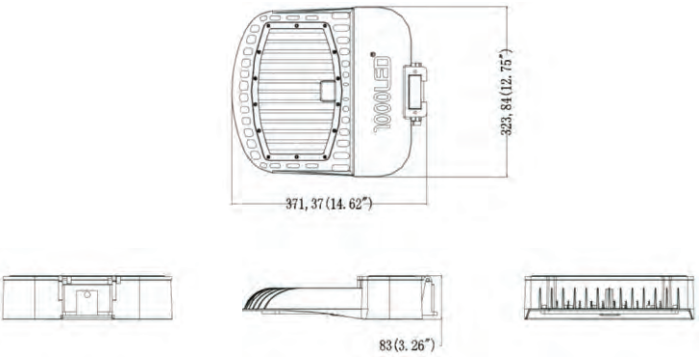


FLOOD LIGHT SERIES



Dimension

Unit: inch/mm  
100/150/200W



Flood Light (Mounting Parts Option)

Model: 1L-10WFL27-50K-D  
1L-15WFL27-50K-D  
1L-20WFL27-50K-D  
Power: 100/150/200W    LF: 15381/21929/29769LM  
PF: >0.99    CRI: Ra>70  
▶ L70: >100,000 hrs  
▶ Input Voltage: AC120~277V  
▶ Protection Level: Wet Location/IP66  
▶ Lighting Angle: 120°



Flood Light Series

Standard

body + (slip fitter / arm / trunnion is optional)

Option 1

body + slip fitter + photocell

Option 2

body + arm + photocell

Option 3

body + trunnion + photocell

Option 4

body + slip fitter + light node + gateway

Option 5

body + arm + light node + gateway

Option 6

body + trunnion + light node + gateway



CANOPY LIGHT



Canopy Light(Round)

Model: 1L-45WCP27-50K-D-M  
1L-70WCP27-50K-D-M

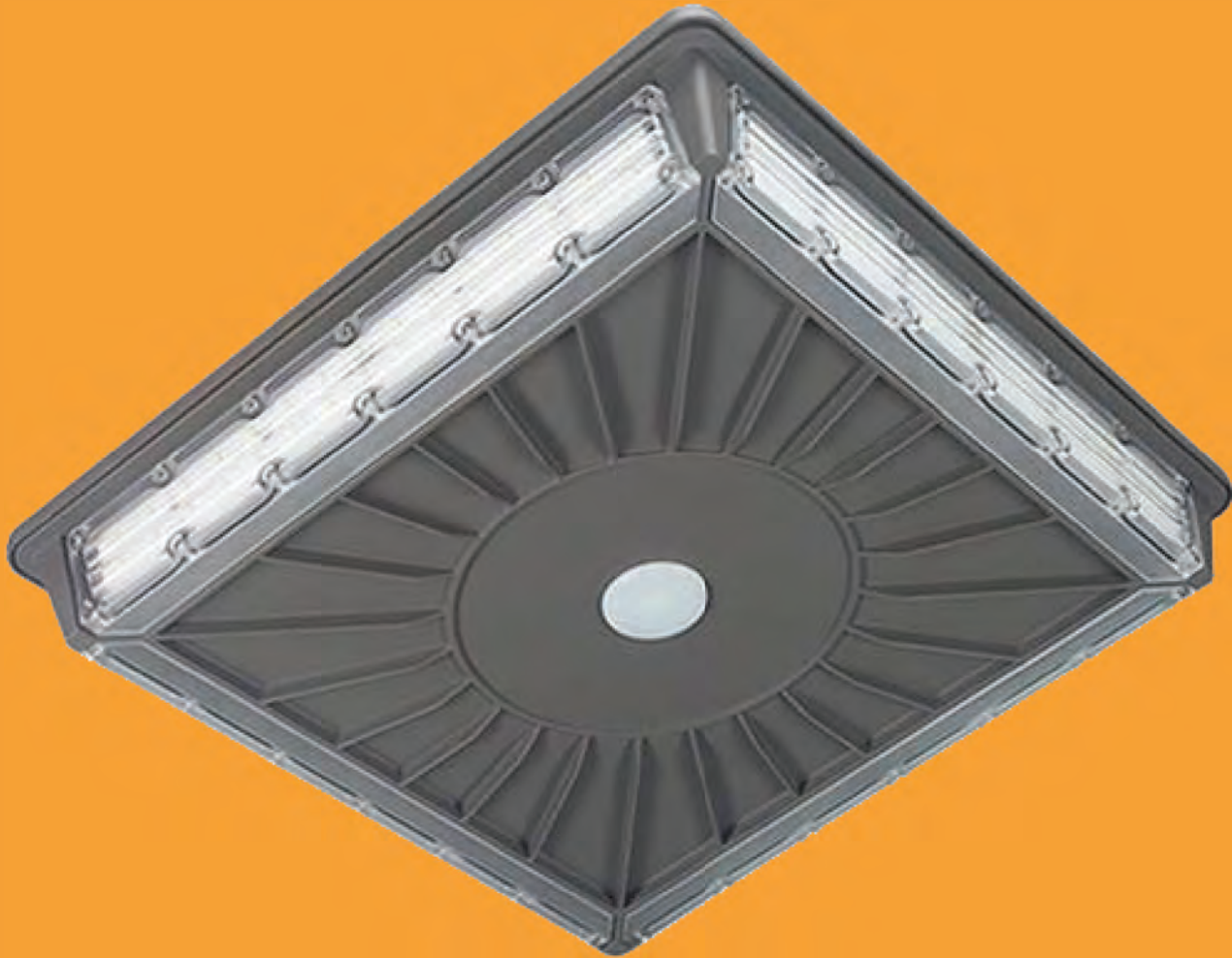
Power: 45W/70W      Luminous Flux: 6300/9800LM

PF: >0.99      CRI: Ra>70

- ▶ L70: >100,000 hrs
- ▶ Input Voltage: AC120~277V
- ▶ Protection Level: Wet Location/IP66
- ▶ Lighting Angle: 145°



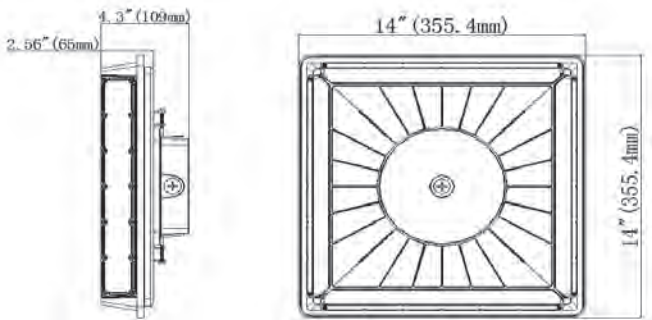
Canopy Light Series



PARKING GARAGE CANOPY

Dimension

Unit: inch/mm  
45/70W



Parking Garage Canopy

Model: 1L-PGC07W27-50K-D-M  
1L-PGC45W27-50K-D-M

Power: 45/70W      Luminous Flux: 4983/8117LM

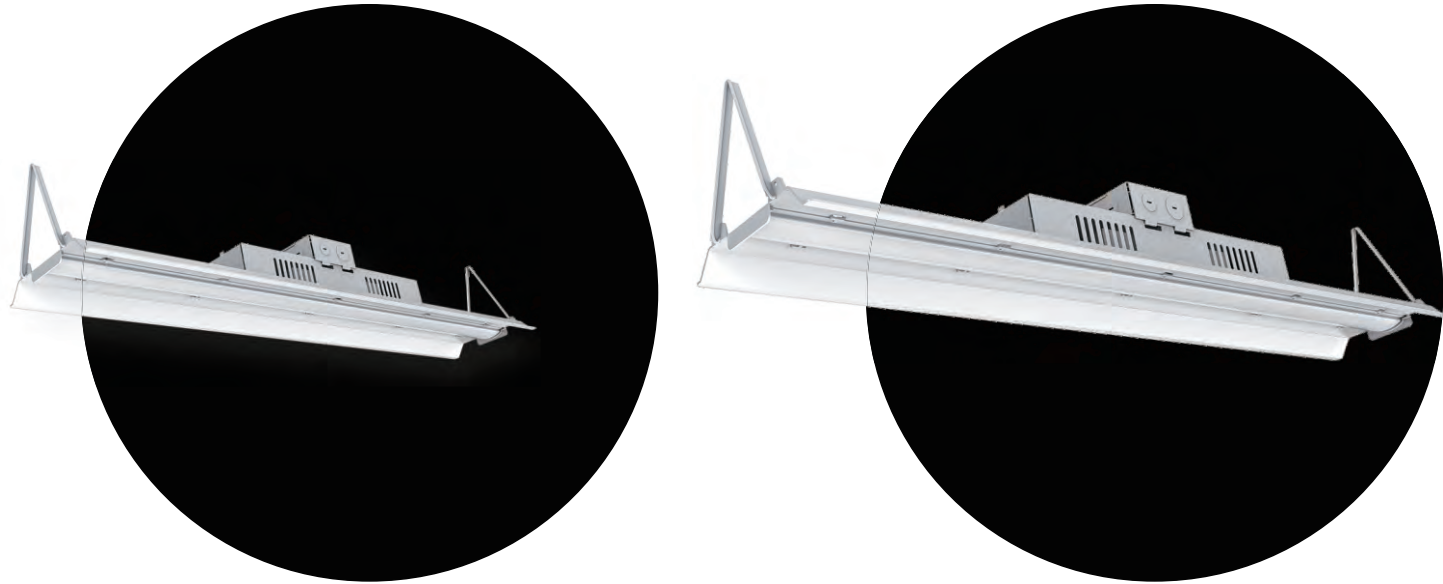
PF: >0.95      CRI: Ra>80

- ▶ L70: >50,000 hrs
- ▶ Input Voltage: AC120~277V Protection
- ▶ Level: Wet Location/IP65
- ▶ Lighting Angle: 279°





## LINEAR HIGH BAY



### LED Linear High Bay (2Ft)

Model: 1L-95W2FTHB27-50K  
1L-15W2FTHB27-50K

Power: 95W/150W Luminous Flux: 13362/20860LM

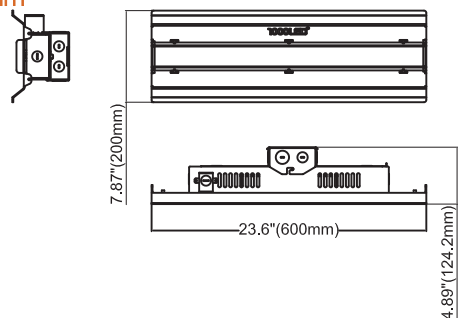
PF: >0.99 CRI: Ra>70

- ▶ L70: >100,000 hrs
- ▶ Input Voltage: AC120~277V
- ▶ Protection Level: Damp
- ▶ Lighting Angle: 110°



#### Dimension

Unit: inch/mm  
95/150W



### LED Linear High Bay (4Ft)

Model: 1L-15W4FTHB27-50K  
1L-19W4FTHB27-50K  
1L-30W4FTHB27-50K

Power: 150W/190W/300W Luminous Flux: 20835/27643/43017LM

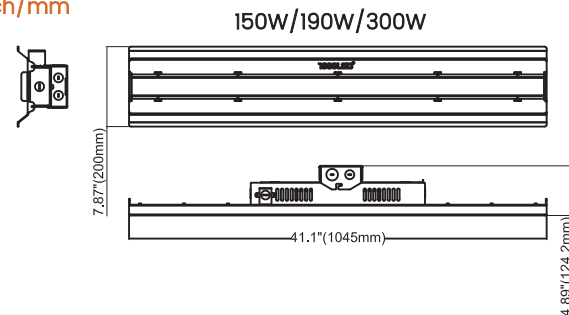
PF: >0.99 CRI: Ra>70

- ▶ L70: >100,000 hrs
- ▶ Input Voltage: AC120~277V
- ▶ Protection Level: Damp
- ▶ Lighting Angle: 110°/111°/111°

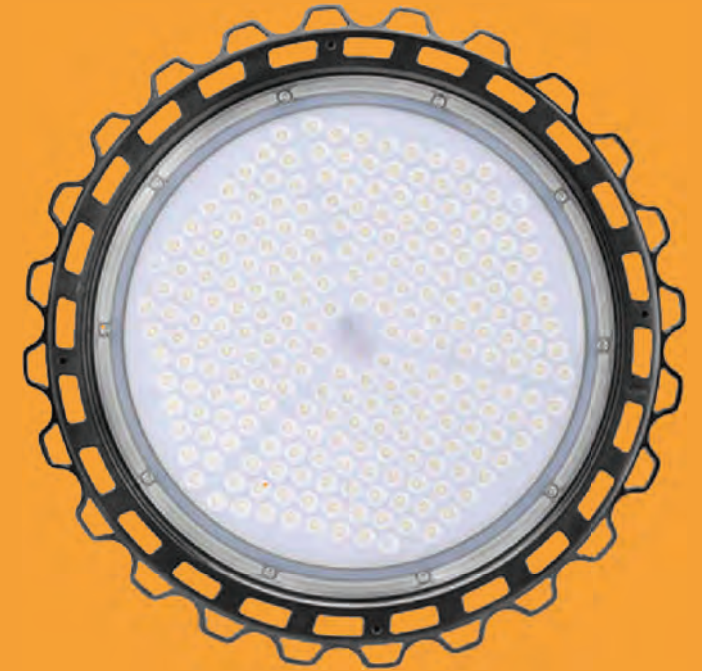


#### Dimension

Unit: inch/mm



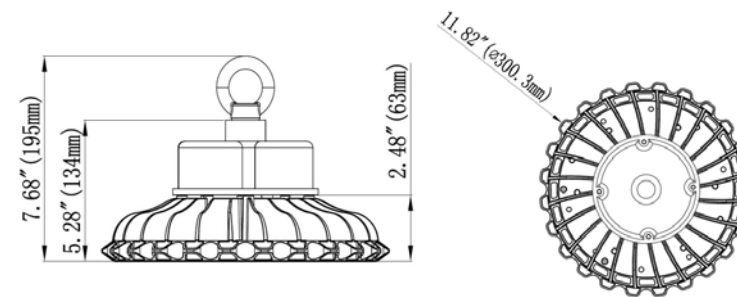
## Linear & UFO High Bay Lights



## UFO High Bay Lights

### Dimension

Unit: inch/mm  
100/150W



### 100/150W UFO High Bay Light

Model: 1L-UHB10W27-50K  
1L-UHB15W27-50K

Power: 100/150W Luminous Flux: 13,400/18,100LM

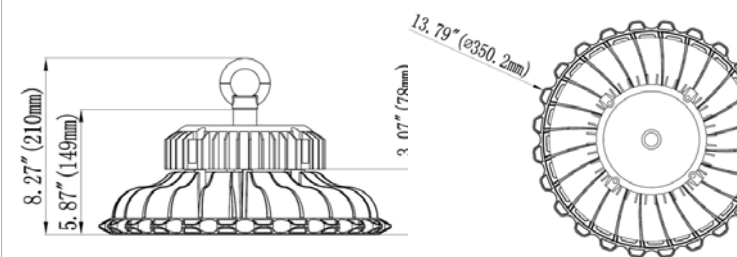
PF: >0.95 CRI: Ra>75

- ▶ WL: >50,000 hrs
- ▶ Input Voltage: AC120~277V Protection
- ▶ Level: Wet Location/IP65 Lighting
- ▶ Angle: 90°90°



### Dimension

Unit: inch/mm  
200W



### 200W UFO High Bay Light

Model: 1L-UHB20W27-50K

Power: 100W/150W Luminous Flux: 23,100LM

PF: >0.95 CRI: Ra>80

- ▶ WL: >50,000 hrs
- ▶ Input Voltage: AC100~277V Protection
- ▶ Level: Wet Location/IP65 Lighting
- ▶ Angle: 90°90°



PANEL LIGHT

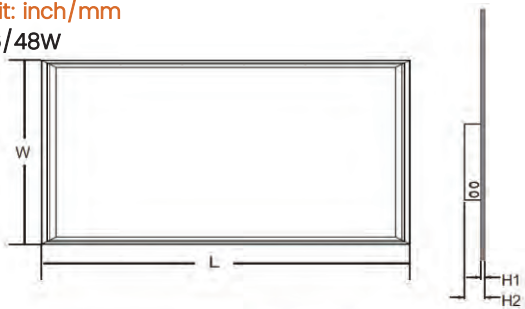


STRIP LIGHT



Dimension

Unit: inch/mm  
36/48W



Part No.	Size(ft)	Outline Dimension(mm)			
		L	W	H1	H2
1L-P22FT36W	2×2 ft	603	603	12	52
1L-P14FT48W	1×4 ft	1205	300	12	52
1L-P24FT48W	2×4 ft	1205	603	12	52

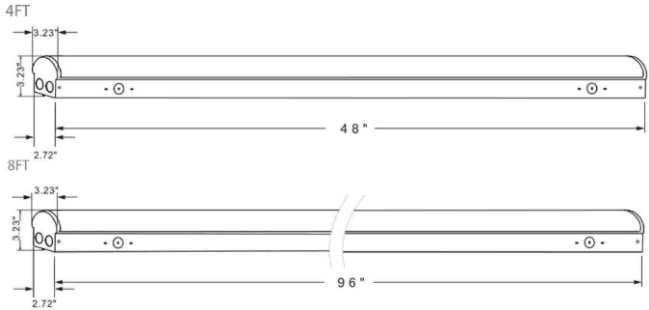
Panel Light

- Model: 1L-P22FT36W-40K  
1L-P24FT48W-40K
- Power: 36W/48W      Luminous Flux: 4860/6480LM
- PF: >0.95      CRI: Ra>70
- ▶ L70: >100,000 hrs
  - ▶ Input Voltage: AC120~277V
  - ▶ Protection Level: Wet Location/IP22
  - ▶ Lighting Angle: 120°



Dimension

Unit: inch/mm  
24/40/64W



Size	Part No.	Power	Luminous Flux	Input Voltage	PF	Ra	Beam Angle	Warranty	Certificate
4FT	DM-ST4FT24	24W	3120LM	AC100-277V	>0.9	>80	110	5 Years	cETLus&Premium
4FT	DM-ST4FT40	40W	5200LM	AC100-277V	>0.9	>80	110	5 Years	cETLus&Premium
8FT	DM-ST8FT40	40W	5200LM	AC100-277V	>0.9	>80	110	5 Years	cETLus&Premium
8FT	DM-ST8FT64	64W	8320LM	AC100-277V	>0.9	>80	110	5 Years	cETLus&Premium

Strip Light

- Model: 1L-ST4FT24  
1L-ST4FT40  
1L-ST8FT40  
1L-ST8FT64
- Power: 24W/40W/40W/64W      Luminous Flux: 3120/5200LM  
5200/8320LM
- PF: >0.90      CRI: Ra>80
- ▶ L70: >100,000 hrs
  - ▶ Input Voltage: AC120~347V/480V
  - ▶ Protection Level: Wet Location
  - ▶ Lighting Angle: 110°



Notes:

Notes: